



## Technical Bulletin: X-6 and X-10 damper selection

*X-6 and X-10 drives are engineered for use with dampers featuring a 3.200", 6-bolt pattern. We recommend use of dampers manufactured by Innovator West. These dampers are available in a wide variety of configurations. Some dampers from ATI may also be usable for X-6 and X-10 applications. See below for information relating to specific applications. Use of a common damper/hub pattern allows drives to be readily switched between engine platforms, when coupled with the corresponding block adapters.*

- Damper-to-hub compatibility: The standard drive hub for X-series gear drive applications features a 6-bolt pattern on a 3.200" diameter. The standard drive hub also features a 2.280" pilot diameter. The drive hub is fixed to the damper by bolting through the six equally spaced 3/8" holes.

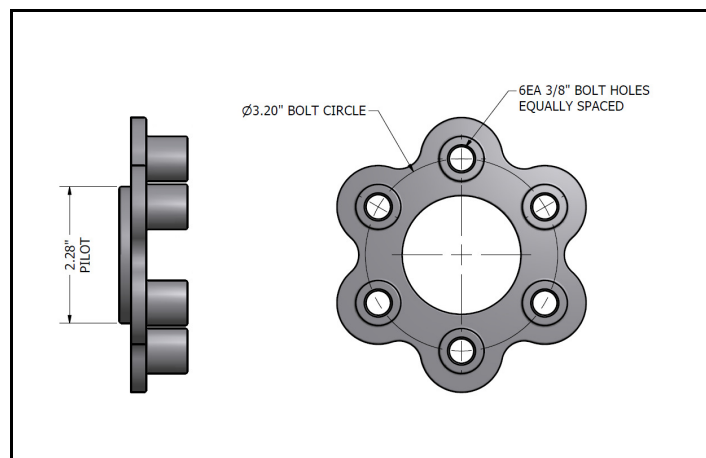


Figure 1 - Standard drive hub (same pattern/pilot as 6-rib drive hub)

### Damper Recommendations:

In addition to featuring a compatible bolt pattern and pilot diameter, use of dampers featuring dual keyways and heavy duty "blower style" hubs will provide maximum crankshaft and gear drive reliability. Innovators West dampers are available with integrated crank trigger magnets, for an additional charge.

X-series gear drive users are eligible for discounted pricing on Innovators West dampers. Contact us at [sales@mtpturbo.com](mailto:sales@mtpturbo.com) for a quote on the damper recommended for your X-series gear drive application.



**Figure 2 - Compatible Innovators West Damper**

**Small Block Chevy:**

Stock (1.246") diameter crank snout - Innovators West P/N 102 w/ BBC pilot modification (made to order), dual Keyway and blower hub options are recommended.

Big Block (1.600") diameter crank snout - [Innovators West P/N 109](#), dual Keyway option is recommended

*Note: Use of a crankshaft with a big block snout is highly recommended, the stock SB Chevy diameter (1.246") crankshaft snout is not ideal for high horsepower supercharged applications.*

**Big Block Chevy:**

[Innovators West P/N 106](#), dual Keyway option is recommended.

**Chevy LS1:**

[Innovators West P/N 845](#), dual Keyway and blower hub options are recommended. Many other LS1 compatible part numbers are available, contact [Innovators West](#) for additional information.

**Small Block/Windsor Ford:**

Applications using Danny Bee/Jesel Belt drive – [Innovators West P/N 213](#), dual Keyway and blower hub options are recommended.

Applications using stock Front Cover –Innovators West P/N 213 with extended length hub (made to order)